

Harmer Shower Drain

Installation and Maintenance Guide - Aluminium & ABS

The Harmer Shower Drain is highly versatile and can be connected to most types of pipework. The cap, clamp and trap have been designed to optimise efficient flow performance for self-cleaning and reduced maintenance.

The Harmer Shower Drain bodies are manufactured in corrosion resistant LM6 aluminium alloy with polyester power coating and in an antimicrobial ABS plastic compound to assist in hygiene and the reduction of bacteria. A choice of Caps, Grates, Clamps and Tile Frames are manufactured in a variety of materials and finishes.

Installation

Installation notes for each component of the Harmer Shower Drain are detailed below (not shown in the actual sequence that would be undertaken on site). Additional, explanatory isometric illustrations and sectional drawings are given in the Technical brochure



Vertical Drain Body

Caps/Grates
Fix into the tile frame or clamp using two stainless steel screws (provided).

Tile Frames
For tiled floor applications, bed the 150mm x 150mm or 200mm x 200mm tile frame into tile adhesive. Apply flexible sealant around edge to prevent cracking.

Clamp Ring
Fix using two M5 x 25mm stainless steel screws (provided) to secure flexible sheet flooring and undertile waterproofing membranes to the drain body.

Foul Air Trap
Push fit the trap with 50mm seal into the drain body. The cross bar allows easy removal.

Vertical Drain Body
Install into plywood flooring or concrete deck construction.
Fix through the 4 no. countersunk holes in the top flange of the body.

Horizontal Drain Body
Install into concrete and joisted timber floor construction.
Fix through the 4 no. countersunk holes in the top flange of the body.

M5 16mm x 2

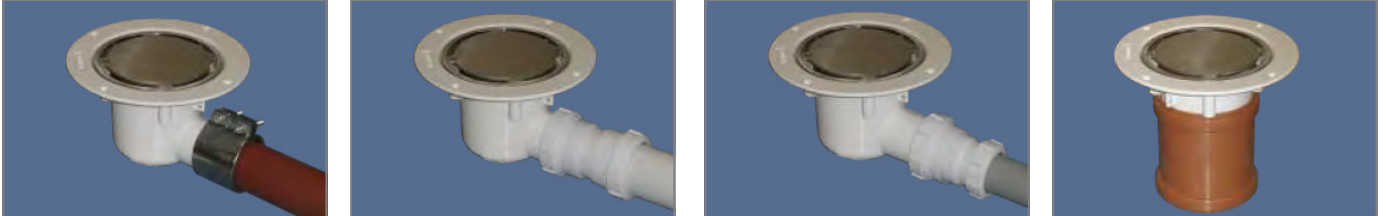
M5 25mm x 4

Note: See the Harmer Shower Drain technical brochure for full application details

Harmer Shower Drain

Installation and Maintenance Guide - Aluminium & ABS

Pipe Connection



CARE AND MAINTENANCE

During site handling, installation and maintenance avoid damage to the coated surfaces. ABS is a durable plastic. However, avoid dropping or impact especially in cold weather. Any contamination arising from construction, such as concrete or cement should be removed from surfaces using a soft cloth or sponge.

Cleaning solutions, such as those used to clean masonry and tiling must never be used with metals especially chrome plated parts. If this happens, the acid solution must be diluted and rinsed away with clean water immediately. When cleaning or wiping always use a soft cloth or sponge - do not use scourers or abrasive compounds.

Modern cleaning processes use sterilizers for hygiene purposes. Proprietary solutions, when used in accordance with the manufacturers instructions, should be safe. **NEVER USE BLEACH, CAUSTIC AGENTS OR SOLVENTS.**

Cleaning Methods

Provide for the following items:

- Latex protective gloves
- Pozidrive screwdriver
- Bucket of clean water
- Sponge
- Household disinfectant

For the Aluminium and ABS drain and all Caps, Grates, Clamps and Tile Frames, wash with soap or mild detergent applied with a clean sponge or soft clean cloth and rinse off with clean water. Watermarks can be removed by lightly buffing with a soft clean cloth. For stainless steel, a soft fibre brush may be used. **NEVER USE STEEL WOOL**

Drain Access

For tiled or flexible sheet flooring. The Harmer Shower Drains removable trap is top accessible for ease of access and maintenance.

